



ACE SL7000 LVRT*

Commercial & Industrial

The ACE SL7000 LVRT is a smart industrial electricity meter, equipped with three current sensors. Installation, on the low voltage network up to 3000A, is both straightforward and fast. Its innovative commissioning concept allows installation without disrupting service. It also offers all the features available in the ACE SL7000 range.

INSTALLATION ON ALL POINTS OF THE LOW VOLTAGE NETWORK

The ACE SL7000 LVRT meter is installed on the low voltage network and is equipped with three independent sensors intrinsic to the meter to measure currents. This sensor technology allows the safe commissioning of the meter on an existing powered installation.

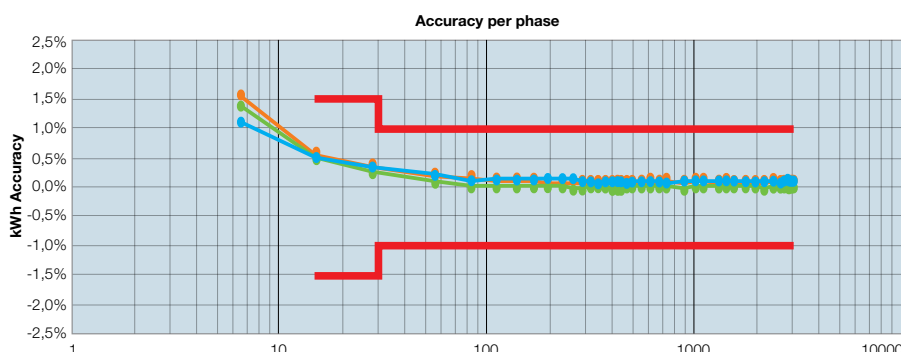
LARGE MEASUREMENT RANGE

By its dynamic, this meter provides accuracy over the entire measuring chain (NMI certification for the meter metrology and sensors) of better than 1% than traditional Class 0,5 with current transformers.

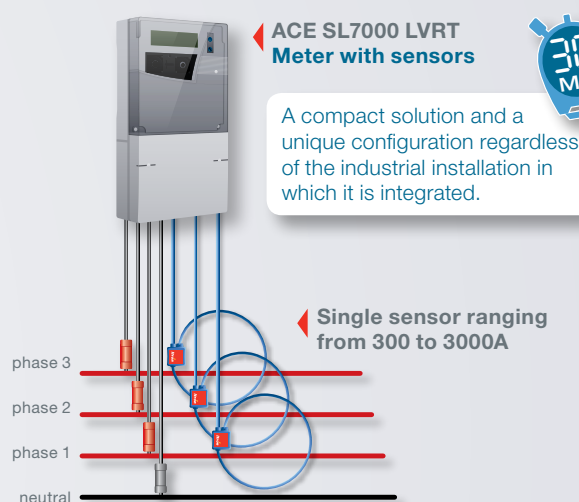
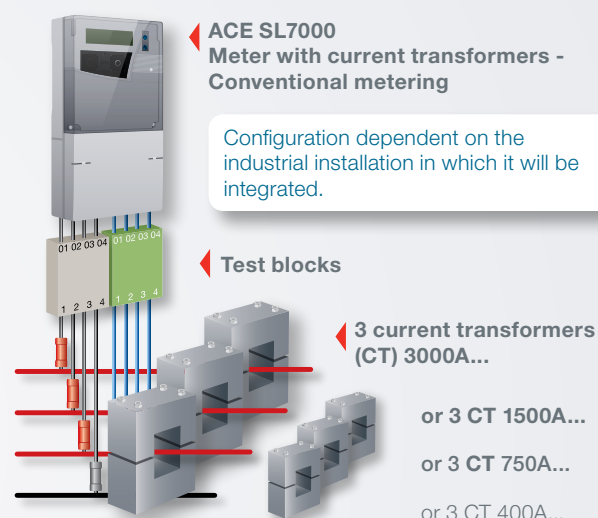
BENEFITS

- » Minimal disruption (no service interruption)
- » Total security for stakeholders
- » Optimized cost
- » Meter & sensors require a small environmental footprint
- » Great metrological precision and outstanding linearity from 30 to 3000A
- » Installation in record time (30 minutes)

A large dynamic range and exceptional linearity: 30 to 3000A

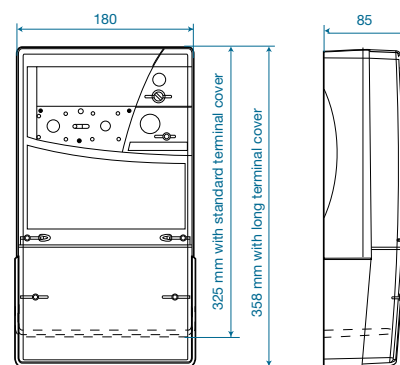


EASY INSTALLATION COMPARED TO CONVENTIONAL SOLUTION



Characteristics

Frequency	50/60 Hz	
Connection type	4-Wire	
Connection configuration	Current	- Rogowski sensors
	Voltage	- Wired on the terminal block, option for 3-Ph live tapping kit (with fuse holders)
Terminal block	Attached current sensors, 3-Ph & N voltages	
Real Time Clock back-up	Li-Batt (replaceable) and internal Supercap	
Installation	Standard DIN triangle	
Protection	IP 51	
Temperature	-40°C to +70°C	
Relative humidity	< 75% (maximum 95%)	
Weight	1,9 kg	
Max dimensions of meter (W x H x D)	Meter body	180 x 251 x 85 mm
	With short terminal cover	180 x 270 x 85 mm
	With standard terminal cover	180 x 325 x 85 mm
	With long terminal cover	180 x 358 x 85 mm



Technical specifications

Voltage Operating Range	3 x 127/220V uo to 3 x 277/480V auto-ranging	
Current Range	Nominal (Ib) :	300A
	Maximum (Imax) :	3000A à 50Hz
		2500A à 60Hz
Global accuracy (including current sensors)	Active Energy	Class 1 (EN/IEC62053-21)
	Reactive energy	Class 1S or 2

Communication ports

Available communication port options	2 x RS232
	1 x RS232 + 1 x RS485
	2 x RS485



Itron is a global technology company. We build solutions that help utilities measure, manage and analyze energy and water. Our broad product portfolio includes electricity, gas, water and thermal energy measurement and control technology; communications systems; software; and professional services. With thousands of employees supporting nearly 8,000 utilities in more than 100 countries, Itron empowers utilities to responsibly and efficiently manage energy and water resources.

Join us in creating a more resourceful world; start here: www.itron.com

ITRON

1, avenue des Temps Modernes
86361 Chasseneuil du Poitou cedex
France

Phone : +33 5 49 62 70 66
Fax : +33 5 49 62 70 89